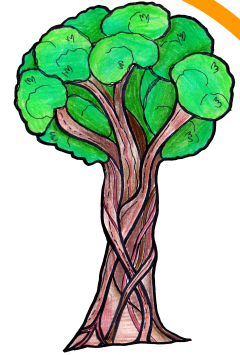


# Te Mahuri Hub Newsletter

## Term 1, #2 2020



*Totara - Rātā*

*Growing Christ-like, Creative, Critical Thinkers*

### Welcome to Week 3/4 of Term 1!

We have had a lovely, settled start to the year which has been fantastic to see for our Senior hub! We look forward to more awesome learning and growing experiences to take place for the rest of the term.

#### Circle time

In circle time we have been looking at the '5 Ways to Wellbeing Model' so far we have really focussed on 'Connect' and how meaningful relationships are nourishing for our overall wellbeing. As a school, we are excited to make wellbeing a focus and to incorporate this model into our classroom routines.



TALK & LISTEN,  
BE THERE,  
FEEL CONNECTED



DO WHAT YOU CAN,  
ENJOY WHAT YOU DO,  
MOVE YOUR MOOD



REMEMBER  
THE SIMPLE  
THINGS THAT  
GIVE YOU JOY



EMBRACE NEW  
EXPERIENCES,  
SEE OPPORTUNITIES,  
SURPRISE YOURSELF



Your time,  
your words,  
your presence

#### LIGHTS

In LIGHTS we have been looking at "People of Aotearoa". We started the term by exploring the Treaty of Waitangi and its importance. We had a great collaborative learning activity where children got to build their own 'special place' outside and another group of children then got to negotiate a Treaty in order to share their space. On reflection, we all got to experience sharing something important to us and we even made our own Treaties- some of which did not get signed in the end! Overall a fantastic way of opening up our LIGHTS work.



### Up-and-Coming Events

<b>Wk 4</b>	Tuesday 25 February	<b>EnviroSchools Silver Reflection Day</b> (FYI Only)
<b>Wk 5</b>	Date TBA	<b>Proposed Te Mahuri Trip to the Christchurch Museum Education Programme</b>
<b>Weeks 1,5,10</b>	Wednesday	<b>Whole School Assembly:</b> at 2:25pm in the shared Assembly space.
<b>All Other Weeks</b>	Wednesday	<b>TM/TP Assembly</b> at 2:25pm in the shared space.. We invite you to join us! There is no Whole School assembly on those weeks.