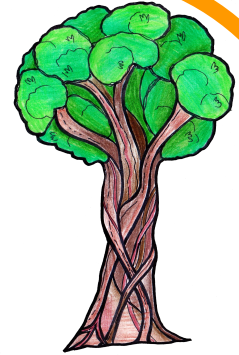




# Te Mahuri Hub Newsletter #10 2020



*Totara - Rātā*  
*Growing Christ-like, Creative, Critical Thinkers*

## Welcome to Week 8, Term 2

1 Timothy 4:12 Let no one look down on your youthfulness, but *rather* in speech, conduct, love, faith *and* purity, show yourself an example of those who believe.



### It is lovely to be back at school!

Our prayers each morning with our kōhanga have been filled with gratitude for the country we live in, the school we have and the students and families that make up the RCS community. We are glad to have your children back in class, if you have any concerns about their learning or behaviour, please come and see us. God Bless, Mandy & Sarah.

### School Uniform

Please make sure correct school uniform is worn. This includes wearing the school polar fleece, not a non-school sweatshirt. Black thermals may be worn under the school polo shirt. Nail polish and make-up should not be worn.

### Technology - Year 7 & 8

From Wednesday 3rd June, Technology will be back at Lincoln Primary School. **So from this Wednesday, Year 7 & 8 children will need to be at school by 8.30am** in order to have time to do the roll and catch the bus. The last 2 weeks have been fun, hands on activities such as animation & Newton's Wheel and were enjoyed by all!

### Spelling

Spelling should have come home on Wednesday either in your child's spelling book or glued to a piece of paper to keep the list safe. Most children have already started their 10 sentences (1 sentence per word), these are due next Wednesday. The children's spelling words should also be learnt by next Wednesday ready for testing.

### High School in 2021

If you have a Year 8 child, most high school enrolments are now open for 2021. Enrolments for Middleton Grange **close 12th June**. All information is on their website.



### Mandarin Lessons with Lily, learning Language and Culture!

