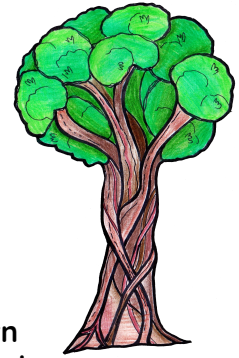


Te Mahuri Hub Newsletter #8 2021



Totara - Rātā
Growing Christ-like, Creative, Critical Learners

This week's Bible Verse: Proverbs 3: 5,6 (ICB)
Trust the Lord with all your heart. Don't depend on your own understanding. Remember the Lord in everything you do. And he will give you success.



Mrs Cleave & Mrs Manson

Last week Mrs Manson accompanied our World Vision Leaders to the Youth Conference. How were they impacted by what they learnt? They feel **empowered** to make positive change. This team we will be running the World Vision 40 hour famine fundraiser for the year - watch this space! The outward focus that our students have is wonderful. They embody our school vision of "Through our faith we H.E.L.P. bring LIGHT to the world". Please support your child if they wish to raise money for World Vision this year. Details will be out soon.



Winter Sport starts next week. As mentioned in previous newsletters, we will walk to Foster Park.

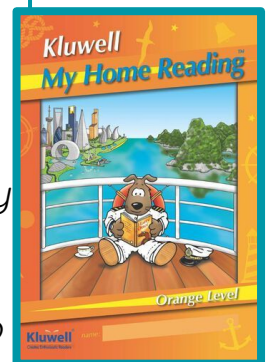
We will leave school around 10.25 and return about 12pm. This will happen rain or shine for the next 3 weeks as the students are all playing indoor sport in the brand new Selwyn Sports Facility.

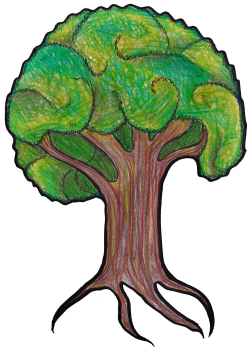
More **Teacher Assistant** news! In addition to the wonderful Mrs Mundt (pictured to the right), we will also have LiAnn and Carol (pictures to come) who will be working with teachers to boost student writing and math progress.



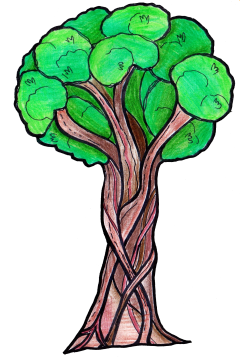
Reading

Don't forget to read at home!
Some of our students are nearly up to 2 weeks/14 nights reading!
Who will be first to 25??





Te Mahuri Hub Newsletter #7 2021



Totara - Rātā
Growing Christ-like, Creative, Critical Learners

Learning Conferences

These take place this week on Tuesday and Thursday. Please book if you have not already done so, unless you have made other arrangements with your child's kōhanga teacher. We are a 3 way team - teacher, child, parent - and it empowers children to see us all on the same page, so to speak.

Please go to www.schoolinterviews.co.nz and use the code 72qzj to book in your child's learning conference. Please book with the teacher whose name is beside each learning area on your child's report.

You will have five minutes for each of the core learning areas, potentially with two different teachers. This is a change for us and will require your cooperation so we can ensure things run smoothly. As a staff we will be working out how we can ensure we can maximize on the available time, stay within five minutes, and not feel rude when finishing and it is the next person's turn.

Wheels Wednesday

Again as our school roll has grown we have needed to make changes to Wheels day to keep us all safe.

- No biking or scootering around the building anymore.
- TP/TM scooters in the car park - the car park will be blocked off during the lunchtime to cars.
- TP/TM bikes in the back paddock (Behind the rickety white gate)
- No biking in the food forest any more
- Walk your bike through the grounds
- TK can scooter or bike on the tarseal between office and teaching block
- Wheels only at lunch time now - not at the 11am break too



Upcoming Events

Week 3 Tuesday 18th May	Basketball Tournament Mr Smith will be taking those involved in the inter-schools basketball to the competition for the day.
Week 3 Tuesday 18th May Thursday 20th May	Learning Conferences - parent/teacher/student Booking times will be emailed next term. Conferences start 2.15pm Tuesday and at 3.30pm Thursday.
Week 3 Thursday 20th May	Cross Country 12.30 start at school.
From Week 4 Thursdays for 6 weeks	Winter Sport Begins All Te Mahuri students will be participating in winter sport run by the Selwyn Sports Trust at Foster Park on Thursday mornings from 10.45. There is no cost and we will be walking there.
Week 5 Friday 4th June	Teacher Only Day - No school Teachers will be in a 1 day conference with the Rolleston Kahui Ako (Cluster of Schools).
Week 6 Monday 7th June	Queens Birthday Holiday - No school
Week 6 & 7	Both Mrs Cleave and Mrs Manson will be hosting student teachers from the University of Canterbury. They will also return in Term 4 for a 4 week placement.
Week 9 Monday 28th June	Teacher Only Day - No School
Week 10 Friday 9th July	Last Day of Term 2. School re-opens Monday 26th July for Term 3.

